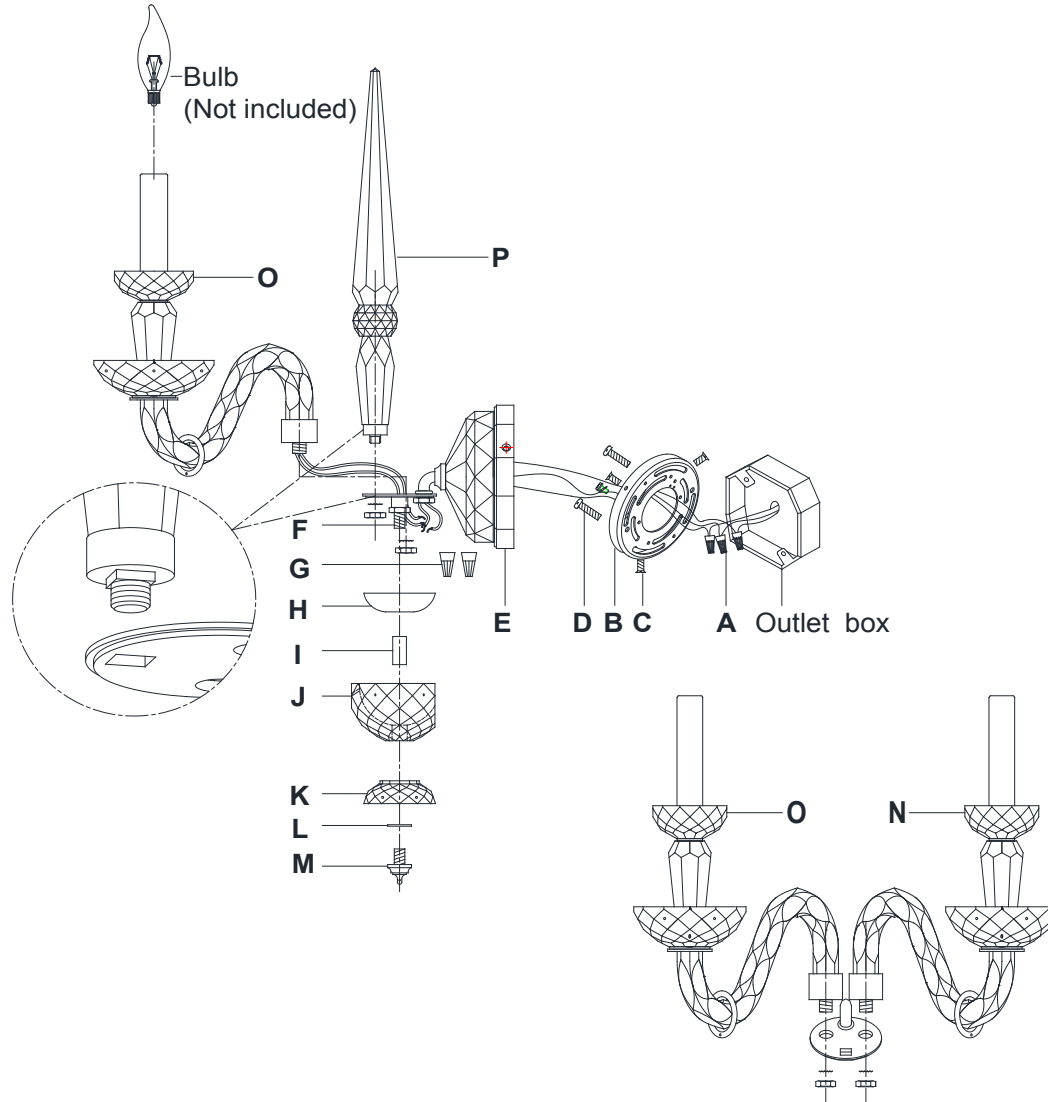


## ASSEMBLY INSTRUCTIONS



## Daniela Medium Two-Light Sconce

Item # RL 2005

WE RECOMMEND INSTALLATION OF THIS LIGHTING FIXTURE BE DONE BY A LICENSED ELECTRICIAN.

WARNING\*\*\*SWITCH OFF THE MAIN ELECTRICAL SUPPLY FROM THE MAIN FUSE BOX/CIRCUIT BREAKER BEFORE INSTALLATION.

INSPECT ITEM CAREFULLY BEFORE ATTEMPTING TO INSTALL. IF THERE IS ANY DAMAGE OR OBVIOUS DEFECT. DO NOT INSTALL.

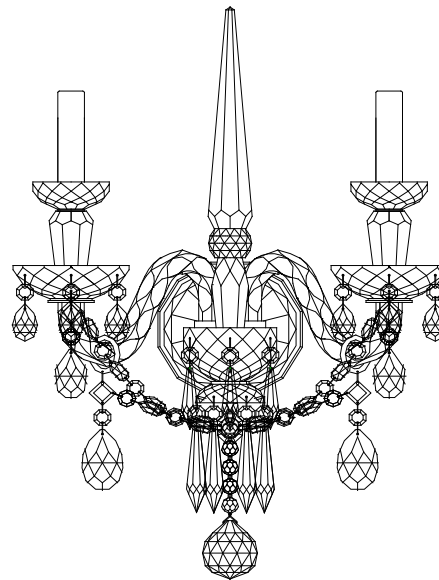
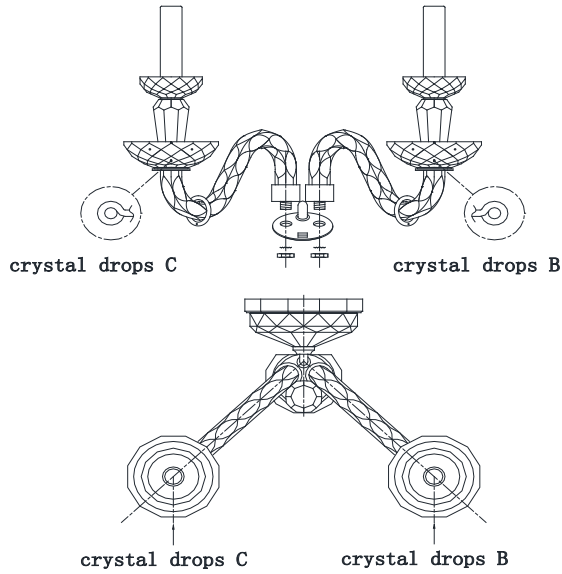
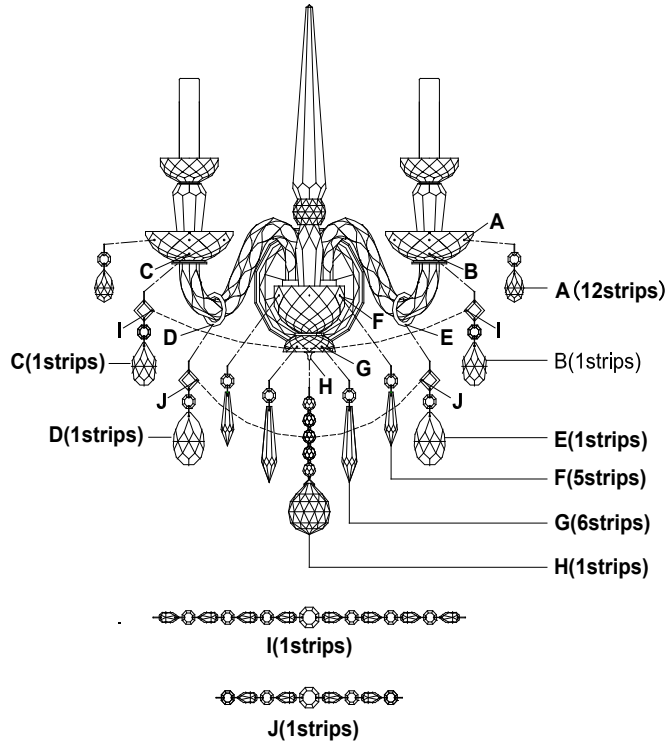
ITEM MAY NOT BE RETURNED ONCE IT HAS BEEN INSTALLED.

- Carefully remove all parts from the box.
- Remove the mounting plate (B) from the backplate (E) by loosening the side screws (C).
- Affix mounting plate (B) onto the outlet box and secure with mounting screws (D).
- Attach the column (P) to the plate (F) and secure with nuts.
- Attach the wired arm (O) and (N) to the plate (F) and secure with nuts.
- Connect the hot wires (smooth edge, markings) from the arms to the main wire (smooth edge, markings) from the plate (F) using wire nut (G).
- Connect the Neutral wires (ribbed, no markings) from the arms to the main wire (ribbed, no markings) from the plate (F) using wire nut (G).
- Wrap all connections individually with electrical tape.
- Attach the metal bowl (H) to the plate (F) and secure with connector (I).
- Attach the crystal bowl (J) & (K) to the connector (I), and then secure it by plastic washer (L) and finial (M).
- Connect the hot wire (smooth edge, markings) from the fixture to the hot wire from the outlet box (usually BLACK). Fasten them together with a plastic wire connector (A) provided and wrap the connection with electrical tape.
- Connect the neutral wire (ribbed, no markings) from the fixture to the wire from the outlet box (usually WHITE).
- DO NOT REVERSE THE HOT AND NEUTRAL CONNECTIONS OR SAFETY WILL BE COMPROMISED.
- Connect ground wire from the fixture (bare copper) to ground wire from the outlet box (usually green or copper in color).
- IT IS IMPERATIVE THAT THIS FIXTURE BE GROUNDED.
- Attach the backplate (E) onto the mounting plate (B) and secure with side screws (C).
- Insert bulb (not included) into the socket.



# RALPH LAUREN

# ASSEMBLY INSTRUCTIONS



## Daniela Medium Two-Light Sconce

Item # RL 2005

WE RECOMMEND INSTALLATION OF THIS LIGHTING FIXTURE BE DONE BY A LICENSED ELECTRICIAN.

WARNING\*\*\*SWITCH OFF THE MAIN ELECTRICAL SUPPLY FROM THE MAIN FUSE BOX/CIRCUIT BREAKER BEFORE INSTALLATION.

INSPECT ITEM CAREFULLY BEFORE ATTEMPTING TO INSTALL. IF THERE IS ANY DAMAGE OR OBVIOUS DEFECT. DO NOT INSTALL.

ITEM MAY NOT BE RETURNED ONCE IT HAS BEEN INSTALLED.

16. Crystal drops assembled:

Attach the crystal drops (A) to the hook (A).

Attach the crystal drops (B) to the hook (B).

Attach the crystal drops (C) to the hook (C).

Attach the crystal drops (D) to the hook (D).

Attach the crystal drops (E) to the hook (E).

Attach the crystal drops (F) to the hook (F).

Attach the crystal drops (G) to the hook (G).

Attach the crystal drops (H) to the hook (H).

Attach the crystal chain (I) one end to the crystal drop (C) and other end to the crystal drop (B).

Attach the crystal chain (J) one end to the crystal drop (D) and other end to the crystal drop (E).

17. Installation is complete, turn on power at fuse or circuit breaker.

\*\*\*Clean with a dry, soft cloth only. Do not use harsh abrasives or chemical agents.



RALPH LAUREN